



OPTCO

DIGITAL IMAGING MADE SIMPLE

USB direct intra-oral Sensor

OPTEO
THE OPTIMUM
MEDICAL IMAGING DEVICE
FOR YOUR DAILY PRACTICE.



Cut down on the visualisation time of your x-rays: they are taken instantly in high-resolution (no developing or scanning time required)

> Quick diagnosis

Integration of the acquired images in your patients' digital files

> Optimised patient/practitioner relationship

The x-rays are processed with the help of digital imaging filters and tools,
Network enabled - information and equipment sharing

> Mobile and portable solution

Patient safety and environmental impact taken into account

> Reduction in the radiation doses, use of non-toxic materials

> The use of chemical agents is not required, recycling is facilitated through minimization of the electronics

THE CONCENTRATION OF TECHNOLOGY MAKES INTRA-ORAL IMAGING EVEN EASIER



Endodontics



Prosthetic and implant
surgery



Periodontics



Caries diagnosis



Atraumatic & ergonomic

The rounded off edges and bevelled sides make the **Opteo** the perfect response to your handling and patient comfort requirements. In addition to this, the thickness of the sensor and the diameter of the cable have been reduced to a minimum.

The flexibility of the cable and the fact it is positioned high on the sensor guarantee easy positioning in the mouth: there is no risk of cable rupture, the comfort in the mouth is ideal.



High-definition & precision

The direct USB connection guarantees instantaneous X-ray image capture.

The high-definition (>20pL/mm) associated to 14 bits grey levels, perfect clarity and ideal brightness and contrast in the images afford excellent legibility of the x-rays. The large active surface area of the sensor offers an optimum format for the x-ray image. Your diagnosis is therefore accurate, quick and reliable.



Simple & automatic

No more cumbersome boxes...

The **Opteo**'s direct USB connection makes its use (with single and multiple station) both simple and intuitive. The three meter cable enables you to connect to your computer no matter what the layout of your office.

The unique **automatic wake-up** system of the sensor reduces the number of steps to be followed to take an x-ray: the capture of a quality image based on the x-ray emissions is also guaranteed.



Opteo is 100% integrated with Quickvision. You can therefore save your images directly in the dental plan of your patient.



Fully adapted to all your clinical practices

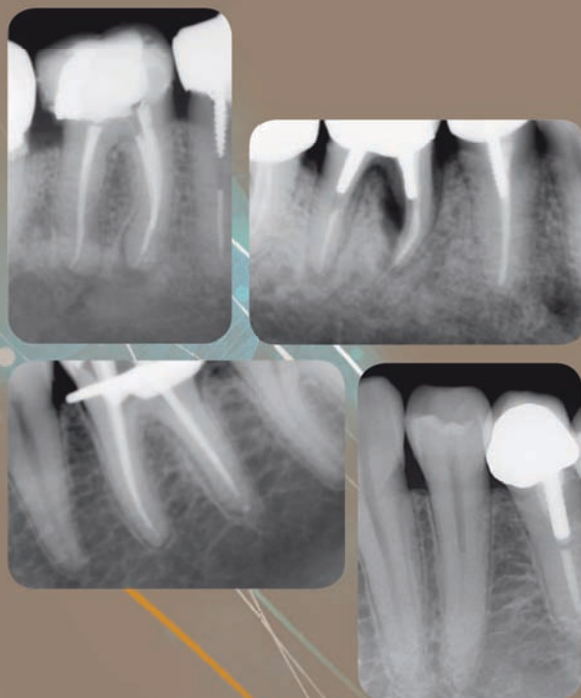
The **Opteo** is available in two sizes:

Size 1 (T1) and size 2 (T2) in order to suit all your practices (retroalveolar, posterior, bitewing etc.).

It can be used in endodontics, parodontics, prosthetic surgery and implants, as well as for cavity diagnosis.



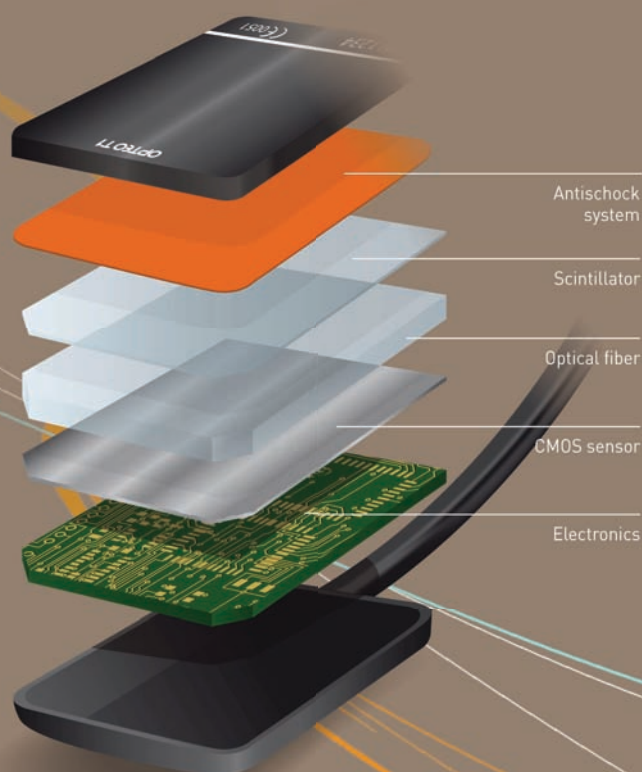
Moreover, it is completely watertight, giving you complete flexibility in your choice of disinfection method: immersion, spraying etc.



Reliable & robust

The **Opteo** sensor marries very high image resolution with increased equipment reliability. It includes a CMOS chip, fibre optics, scintillator and a shock absorption system.

The gold-plated USB connector ensures rapid transmission of the signals and excellent corrosion resistance. The cycle life of your system is also greatly enhanced.





Atraumatic
& ergonomic



Simple & automatic



High-definition & precision



Fully adapted to all
your clinical practices



Reliable & robust



Owandy Radiology is an internationally-recognised manufacturer of dental radiology systems and developer of imaging software. Its software is currently used by almost half of the dental practitioners in France and its range of digital imaging solutions is made available to dentists in more than 50 countries worldwide. In addition to its products and services, **Owandy Radiology** strives to contribute to the improvement of oral health and patients' well-being. As a committed and innovative company, **Owandy Radiology** has been a partner of choice for dentists for more than 20 years.

TECHNICAL SPECIFICATIONS

Sensor technology: CMOS

**Outer dimensions of the sensor
(length x width x thickness):**

39 x 25 x 5 mm (T1)

43 x 31 x 5 mm (T2)

Sensitive surface:

30 x 20 mm (600 mm²) - (T1)

34 x 26 mm (900 mm²) - (T2)

Surface in pixels:

1500 x 1000 pixels (T1)

1700 x 1300 pixels (T2)

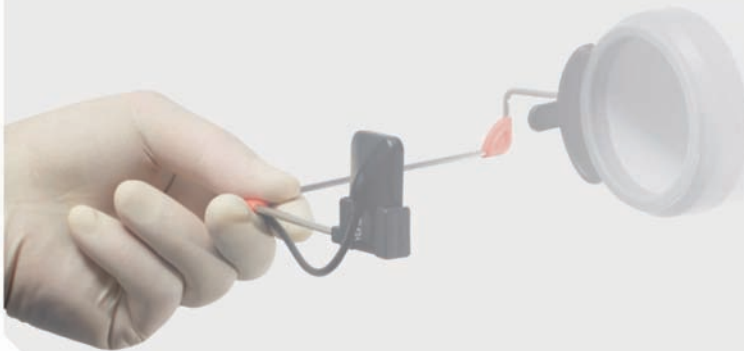
Sensor resolution: > 20 μ m (T1 and T2)

Sensor cable length: 3 m

Grey levels: 14 bits (16384 grey levels)

Connexion: Standard USB:

USB 2.0 High-Speed (480Mbit/s) and USB 3.0.



Dealer's stamp

Owandy Radiology
2, rue des Vieilles Vignes
77183 Croissy-Beaubourg
FRANCE

Tel.: +33 (0)1 64 11 18 18
Fax: +33 (0)1 64 11 18 10
Email: export@owandy.com
www.owandy.com



SOFTWARE

DIGITAL SENSORS

2D - 3D PANORAMICS

INTRAORAL RADIOLOGY

CAMERAS